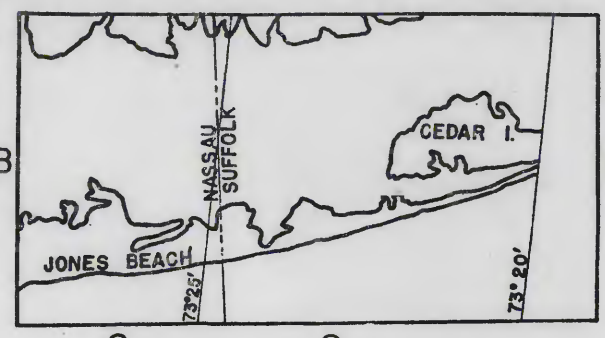
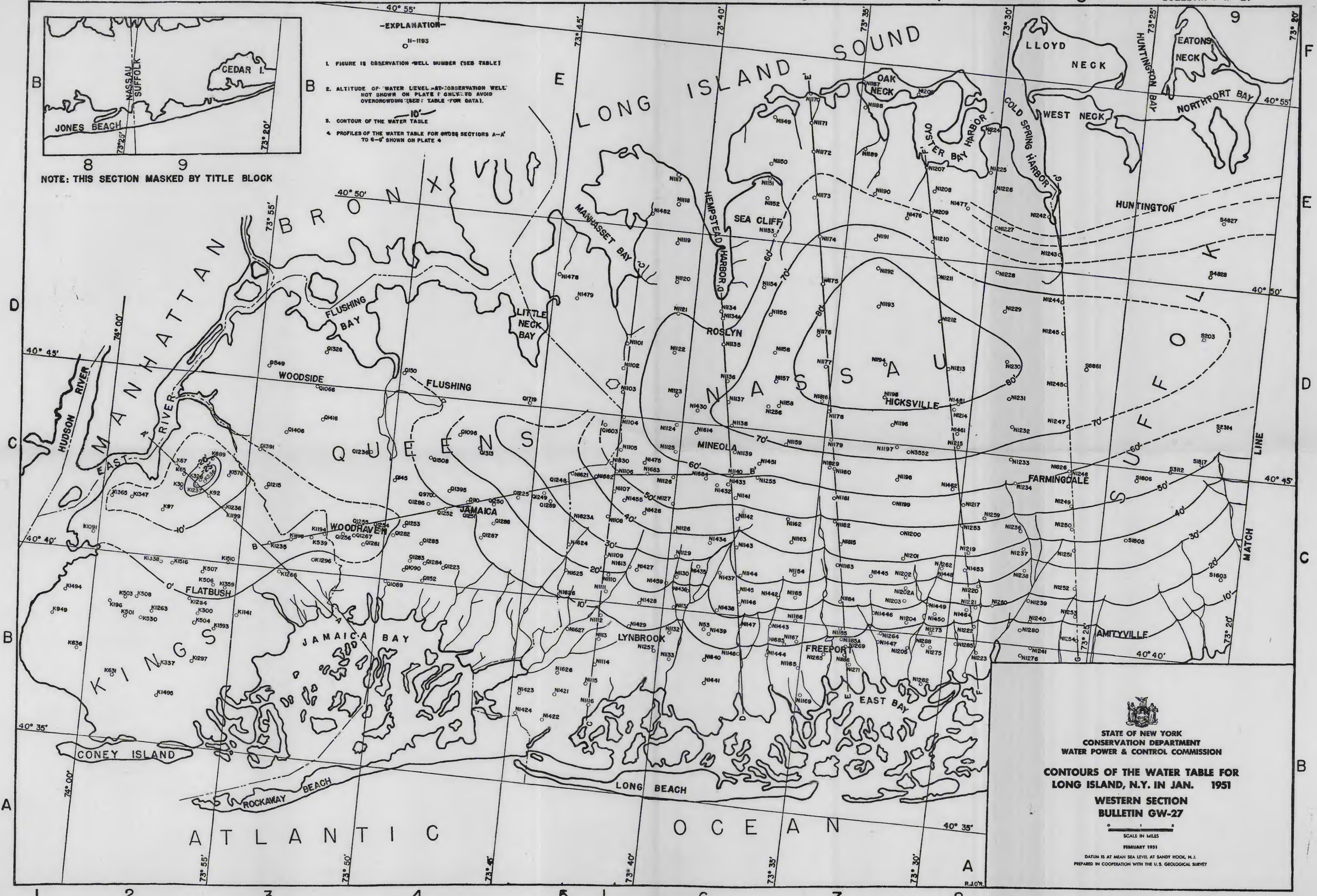



-EXPLANATION-

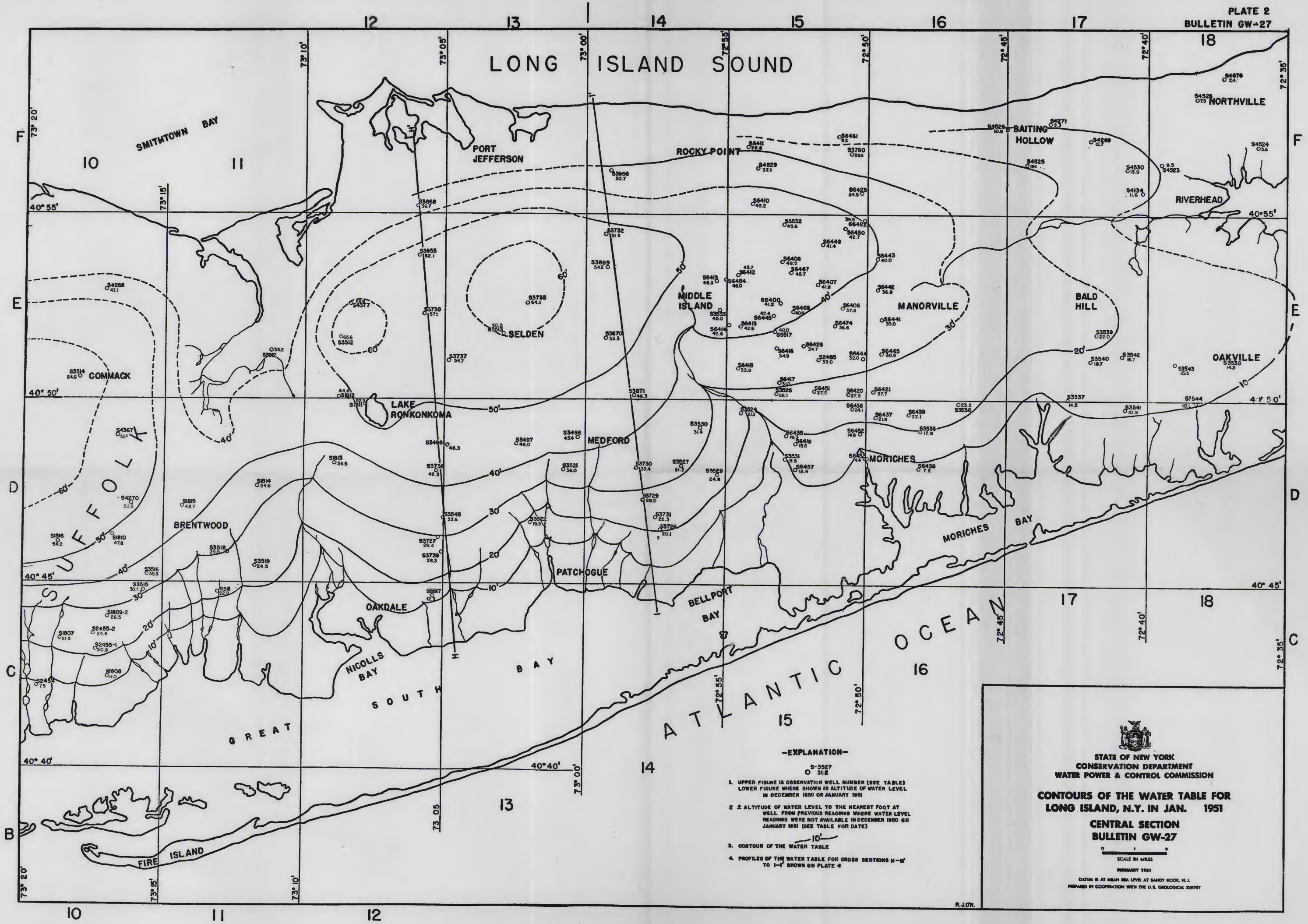
1. FIGURE IS OBSERVATION WELL NUMBER (SEE TABLE)
2. ALTITUDE OF WATER LEVEL AT OBSERVATION WELL NOT SHOWN ON PLATE (ONLY TO AVOID OVERCROWDING (SEE TABLE FOR DATA).
3. CONTOUR OF THE WATER TABLE
4. PROFILES OF THE WATER TABLE FOR CROSS SECTIONS A-A' TO G-G' SHOWN ON PLATE 6



NOTE: THIS SECTION MASKED BY TITLE BLOCK




  
 STATE OF NEW YORK  
 CONSERVATION DEPARTMENT  
 WATER POWER & CONTROL COMMISSION  
**CONTOURS OF THE WATER TABLE FOR  
 LONG ISLAND, N.Y. IN JAN. 1951**  
**WESTERN SECTION  
 BULLETIN GW-27**  
 SCALE IN MILES  
 FEBRUARY 1951  
DATUM IS AT MEAN SEA LEVEL AT SANDY HOOK, N.J.  
 PREPARED IN COOPERATION WITH THE U.S. GEOLOGICAL SURVEY



**-EXPLANATION-**

1. UPPER FIGURE IS OBSERVATION WELL NUMBER (SEE TABLE)  
LOWER FIGURE WHERE SHOWN IS ALTITUDE OF WATER LEVEL  
IN DECEMBER 1950 OR JANUARY 1951
2. ALTITUDE OF WATER LEVEL TO THE NEAREST FOOT AT  
WELL FROM PREVIOUS READING WHERE WATER LEVEL  
READINGS WERE NOT AVAILABLE IN DECEMBER 1950 OR  
JANUARY 1951 (SEE TABLE FOR DATE)
3. CONTOUR OF THE WATER TABLE
4. PROFILES OF THE WATER TABLE FOR CROSS SECTIONS H-1  
TO I-1 SHOWN ON PLATE 4



STATE OF NEW YORK  
CONSERVATION DEPARTMENT  
WATER POWER & CONTROL COMMISSION

**CONTOURS OF THE WATER TABLE FOR  
LONG ISLAND, N.Y. IN JAN. 1951**

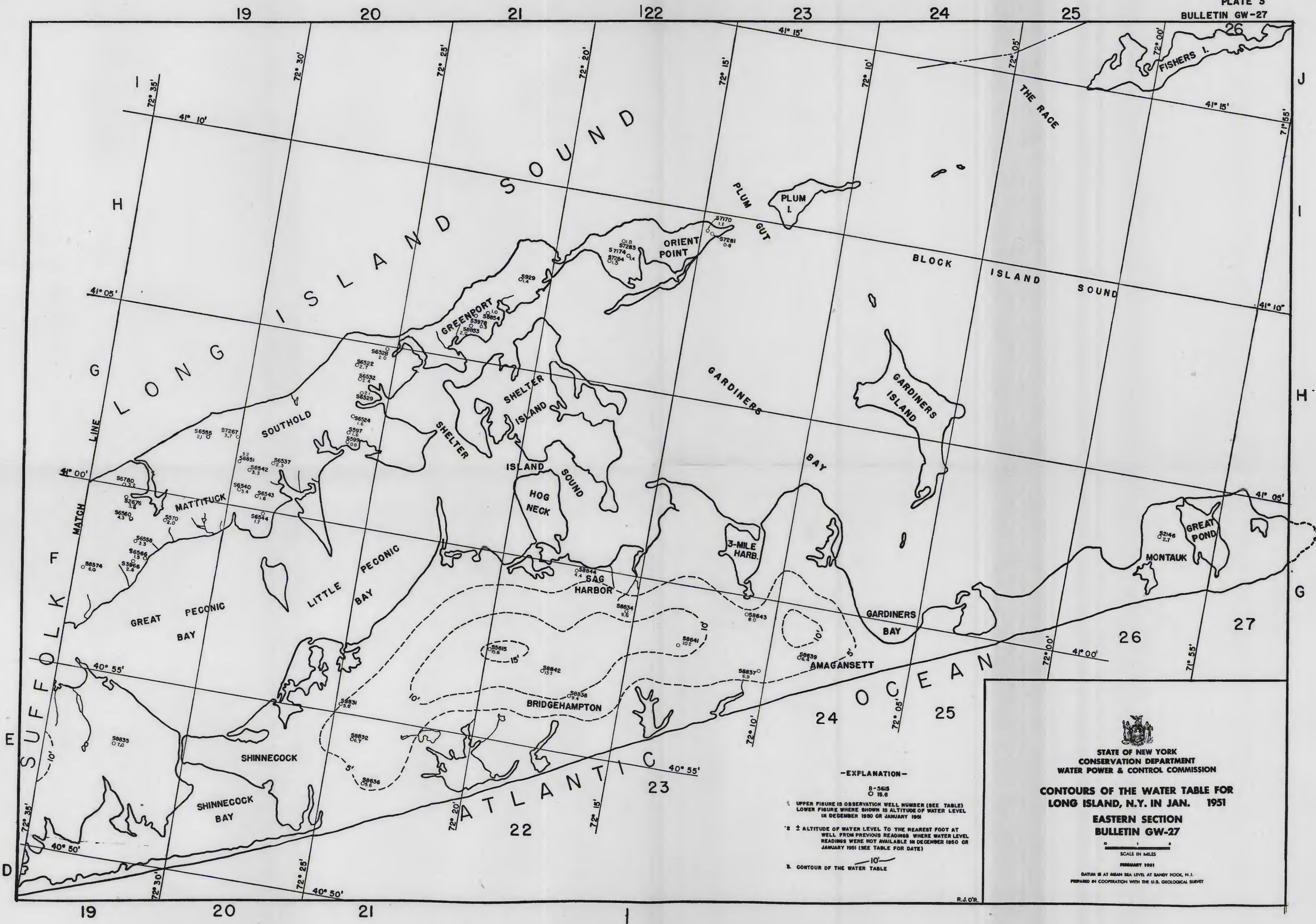
**CENTRAL SECTION  
BULLETIN GW-27**

SCALE IN MILES  
0 1 2

FEBRUARY 1951

DATUM IS AT MEAN SEA LEVEL AT SANDY HOOK, N.J.  
PREPARED IN COOPERATION WITH THE U.S. GEOLOGICAL SURVEY

R.J.O.R.




**-EXPLANATION-**

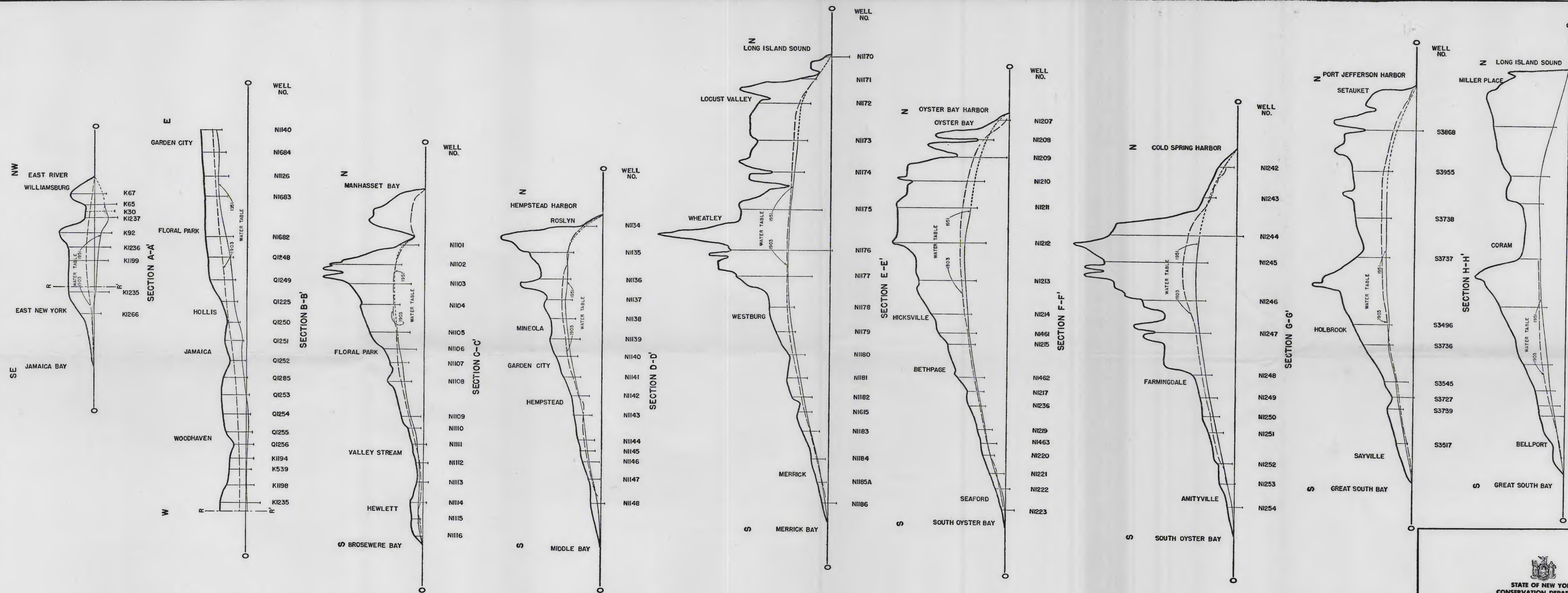
○ - 5615  
○ - 15.6

1. UPPER FIGURE IS OBSERVATION WELL NUMBER (SEE TABLE)  
LOWER FIGURE WHERE SHOWN IS ALTITUDE OF WATER LEVEL  
IN DECEMBER 1950 OR JANUARY 1951


2. ± ALTITUDE OF WATER LEVEL TO THE NEAREST FOOT AT  
WELL FROM PREVIOUS READINGS WHERE WATER LEVEL  
READINGS WERE NOT AVAILABLE IN DECEMBER 1950 OR  
JANUARY 1951 (SEE TABLE FOR DATE)

3. CONTOUR OF THE WATER TABLE

  
**STATE OF NEW YORK**  
**CONSERVATION DEPARTMENT**  
**WATER POWER & CONTROL COMMISSION**  
**CONTOURS OF THE WATER TABLE FOR**  
**LONG ISLAND, N.Y. IN JAN. 1951**  
**EASTERN SECTION**  
**BULLETIN GW-27**  
 SCALE IN MILES  
 FEBRUARY 1951  
 DATUM IS AT MEAN SEA LEVEL AT SANDY HOOK, N.J.  
 PREPARED IN COOPERATION WITH THE U.S. GEOLOGICAL SURVEY



NOTE: LOCATIONS OF CROSS SECTIONS ARE SHOWN ON PLATES 1-3

  
**STATE OF NEW YORK**  
**CONSERVATION DEPARTMENT**  
**WATER POWER & CONTROL COMMISSION**

**PROFILES OF THE WATER TABLE OF THE**  
**WESTERN AND CENTRAL PARTS OF**  
**LONG ISLAND, N.Y. IN 1903 AND 1951**  
**BULLETIN GW-27**

SCALE  
HORIZ. 1" = 1 MILE  
VERT. 1" = 50 FEET  
FEBRUARY 1951  
BASED ON MEAN SEA LEVEL AT SANDY HOOK, N.J.  
PREPARED BY COOPERATION WITH THE U.S. GEOLOGICAL SURVEY

R.J.O.R.